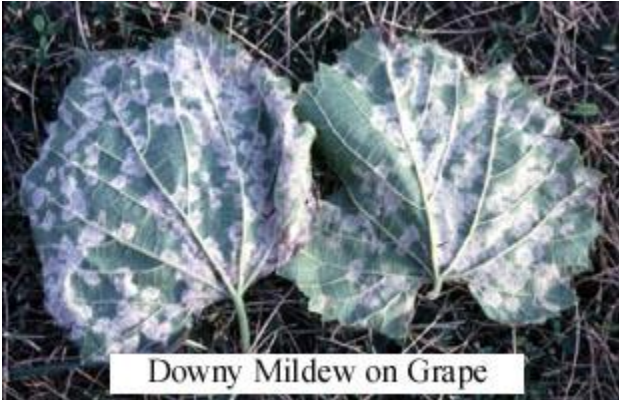


Problem: Grapes, Downy Mildew



Hosts: Grapes

Description: This wet-weather fungus attacks both the leaves and fruit. Small yellow spots initially develop on the upper surface of the leaf. If you flip the leaf over, you will find a fluffy white growth on the surface. This should not be confused with powdery mildew that causes a dusty white growth on the upper leaf surface.

Recommendations: There are many products labeled for downy mildew. Commercial grape growers or other large-scale growers should consult the current Midwest Fruit Pest Management Guide at the following website: <https://store.extension.iastate.edu/product/14488>

Please refer to the full guide and read the product labels for information on timing, safety, resistance management, and pre-harvest restrictions. Captan, Fruit Tree Sprays (Bonide Captan Fruit & Ornamental) and copper compounds (Bonide Copper Fungicide, Bonide Liquid Copper) may be available for homeowner use.

References:

[Midwest Fruit Pest Management Guide](#), Midwest Fruit Workers Group, K-State Research & Extension pub MF3278

Last Update: 10/27/2023

Brand names appearing in this publication are for product identification purposes only. No endorsement is intended, nor is criticism implied of similar products not mentioned.

“Knowledge for Life”

Kansas State University Agricultural Experiment Station and Cooperative Extension Service